

SUPPLIER: ROBERT BOSCH GMBH

COMPONENT: 0 221 604 103

REGULATIONS AND REMARKS:

CAUTION: PRIMARY CONNECTOR CONDUCTING DANGEROUS VOLTAGE.

CAUTION: OUTER CORE MAY CONDUCT DANGEROUS VOLTAGE.

DON'T DISASSEMBLE SPARK PLUG CONNECTOR.

IGNITION COILS, THAT HAVE FALLEN DOWN, HAVE TO BE SORTED OUT AND REPLACED.

SCREW FASTENING TORQUE: 9 Nm CLASS B ACCORDING TO TAB. 01340/01 (H)

NOT DIMENSIONED RADIUS: >0.5

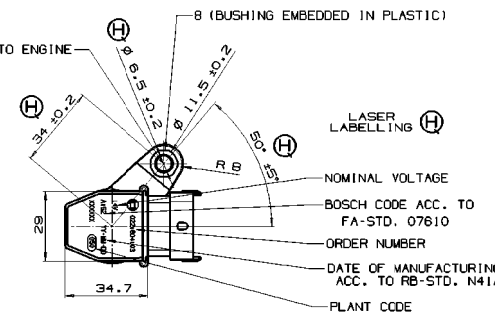
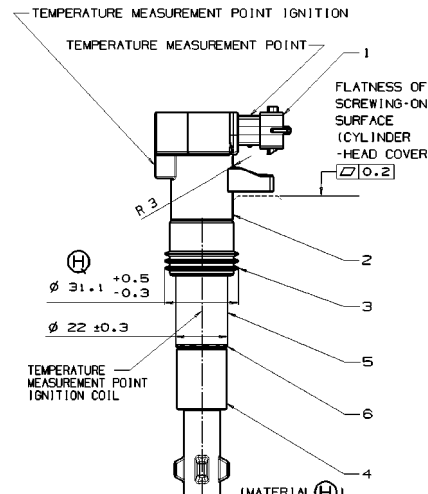
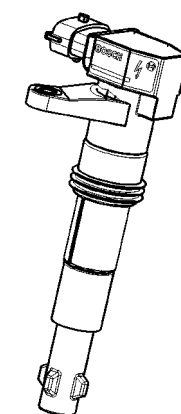
BLACK 4-PIN CONNECTOR TO BE PLUGGED IN RB 1 928 404 160 (4-PIN CONNECTOR, CODE I, (H) OFFER DRAWING A9280003511.

MEANING AND APPLICATION OF (H)-SYMBOLS ACC. TO TAB. ENCLOSED WITH AUTOCALIFICAZIONE FOLDER.

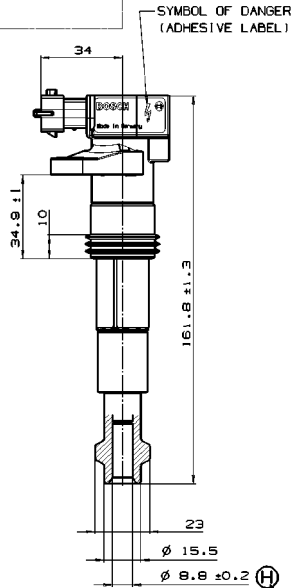
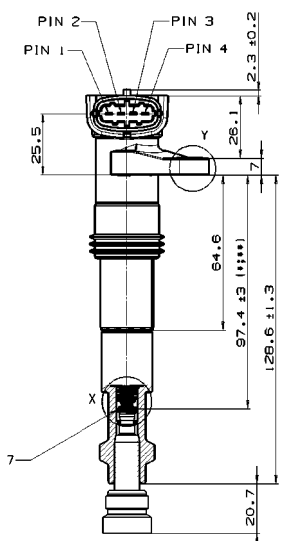
TESTS ACC. TO TECHNICAL CUSTOMER INFORMATION (Y 221 K15 104e)

• L:93.4 FOR MAXIMUM SPRING PRESSURE.

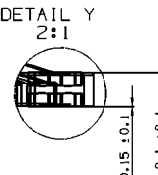
•• L:100.4 FOR MINIMUM SPRING PRESSURE.



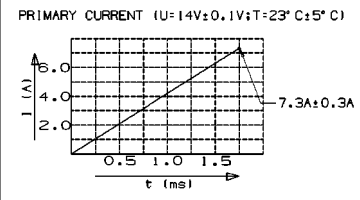
FIXING POINT FOR CONNECTION TO ENGINE  
MAX. TIGHTENING: 11Nm



CONTACT SPRING:  
WIRE DIAMETER: 0.7mm  
MAX. OUTER DIAMETER: 8.5mm



ELECTRICAL CHARACTERISTICS ACCORDING TO TECHNICAL CUSTOMER INFORMATION



ELECTRICAL CHARACTERISTICS (T=23°C ± 5°C)

NOMINAL VOLTAGE: 14 V ± 0.1V

NOMINAL CURRENT: 7.3 A ± 0.3A (H)

RESISTANCE: PRIMARY 0.57 OHM ± 10%  
CAN NOT BE MEASURED AT THE FINAL PRODUCT

SECONDARY 5.1 KOHM ± 10%

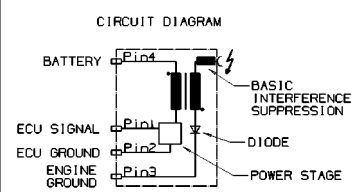
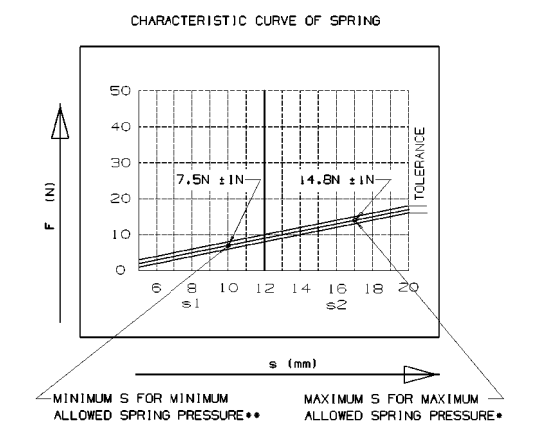
INDUCTANCE: PRIMARY 2.2 mH ± 10%  
CAN NOT BE MEASURED AT THE FINAL PRODUCT

SECONDARY 12 H ± 10%

SECONDARY VOLTAGE (20 pF): >28.5 kV (H)

(20pF//1MOHM): >24 kV

SPARK ENERGY: >35 mJ



CAUTION: PRIMARY CONNECTOR CONDUCTING DANGEROUS VOLTAGE

0 221 604 103-00	0 221 604 103	0 221 604 103	Y 221 K15 104e	46794782
GRUNDFOS - Zetaphone	Boehrler - Hiltner	Top	TECHNICAL CUSTOMER INFORMATION	CUSTOMER
DRIFT DRAWING NUMBER	ORDER NUMBER	TYPE		

Document type: 002		Issue: 05.04.2002	Revision: 15.05.2001	Scale: 1:1	Weight: 200 g
1. For design	05.04.2002	01			
2. For production	05.04.2002	01			
3. For change	05.04.2002	01			
4. For approval	05.04.2002	01			
5. For drawing	05.04.2002	01			
6. For drawing	05.04.2002	01			
7. For drawing	05.04.2002	01			
8. For drawing	05.04.2002	01			
9. For drawing	05.04.2002	01			
10. For drawing	05.04.2002	01			